

Municipality of Strathroy-Caradoc

Reopening of Ice Facilities



Contents

STRATEGY	3
Phased Approach.....	3
Phase 1.....	3
Phase 2.....	3
Phase 3.....	3
CROWD CONTROL	4
Entering the Facility.....	4
Exiting the Facility.....	4
Participant Traffic Flow	5
SAMPLE ICE SCHEDULE	
Recreational Programs	6
Concession Operation.....	6
ICE AND FACILITY BOOKING	7
BEFORE ATTENDING THE FACILITY	7
SIGNAGE	8
GENERAL PUBLIC SCREENING QUESTIONNAIRE.....	10

Strategy

Phased Approach

The ice facilities and associated amenities located within either the Gemini Sportsplex or West Middlesex Memorial Centre (WMMC) will open through a deliberate phased approach. This will see portions of facilities opening up as demand dictates, and the provincial regulation allows. The overall safety and community cooperation is required to move from one phase to another. If cooperation is not gained by organizations, community members and participants the decision to move into another stage maybe delayed or retracted.

This document is subject to change at any time without notice.

Phase 1

Gemini Sportsplex will open one sheet of ice starting in Mid-August incorporating the requirements/guidelines set out by the Province, Middlesex London Health Unit and the Municipality. These requirements will include but are not limited to:

- Physical Distancing
- Mask/Face Coverings at entry point of facility (except on ice surface)
- Gathering Limits
- Limited access to change rooms (15 minutes prior to and after rentals)
- Contact Tracing
- Passive Screening
- No Showers
- Signage

Phase 2

This phase may see the opening of the Wecast Room, Pete's Sports, along with the Dance Studio, Boardroom and Gymnasium at WMMC. The second sheet of ice at the Gemini will be installed should the demand warrant it and if the provincial regulation will allow.

This phase will continue utilizing the requirements/guidelines set out by the Province, Middlesex London Health Unit and the Municipality.

Phase 3

The third phase will include installing the ice at WMMC should the demand warrant it. An alternative use maybe sourced should the demand not warrant its installation.

This phase will continue utilizing the requirements/guidelines set out by the Province, Middlesex London Health Unit and the Municipality.

The information provided below will further outline the requirements.

Crowd Control

Entering the Facility

All participants are encouraged to arrive at the facility dressed. There is limited space and time available within change rooms. To allow for physical distancing, change rooms will only accommodate a maximum of 8 participants at any one time. Standard rentals will be provided 3 change rooms, per rental. This will allow for of 22 skaters per rental utilizing the change rooms at any given time. Additional skaters if required, to a max of 25 may utilize the designated chairs spaced 6' apart to finish changing.

The maximum number of users include referees, coaches, scorekeepers, players etc. allowed in a space at any given time is 50 people. This will allow for 25 people per ice rental.

Due to gathering limits of 50 people, we will not be allowing spectators at this time.

Each organization or renter who is utilizing the facility shall conduct passive screening of all participants and spectators prior to being allowed entry into the ice area. The organization or renter will be stationed within the lobby of the Gemini and will meet participants and spectators, if permitted, as they arrive at the facility. This gate keeper will instruct all visitors to the facility to complete the screening tool provided on the municipal tablet to allow for contact tracing. The organization cannot start to allow their members into the facility until they are operating this registration table, so it is imperative that those individuals arrive first/early. Additional screening may take place prior to participants and spectators being granted access to the facility. If an organization or renter does not have a screening tool they can utilize the self-assessment app which can be found at <https://covid-19.ontario.ca/self-assessment/> or the screening tool at the end of this document.

Participants will be asked to follow the directional signage to the change rooms and ice area. Players are to stay in their rooms until ice is ready and they will proceed onto the ice through the designated ice entry point in a physical distanced format. Players who just exited the ice surface have 15 minutes to change and exit the facility through the identified exit. No player is allowed to exit the dressing room until the other players have fully entered the ice surface.

At this time there will be no keys provided for locking change rooms. If a group would like a room locked they will need to contact the facility staff. It will be the responsibility of the organization or renter to monitor physical distancing and direct people to the appropriate locations.

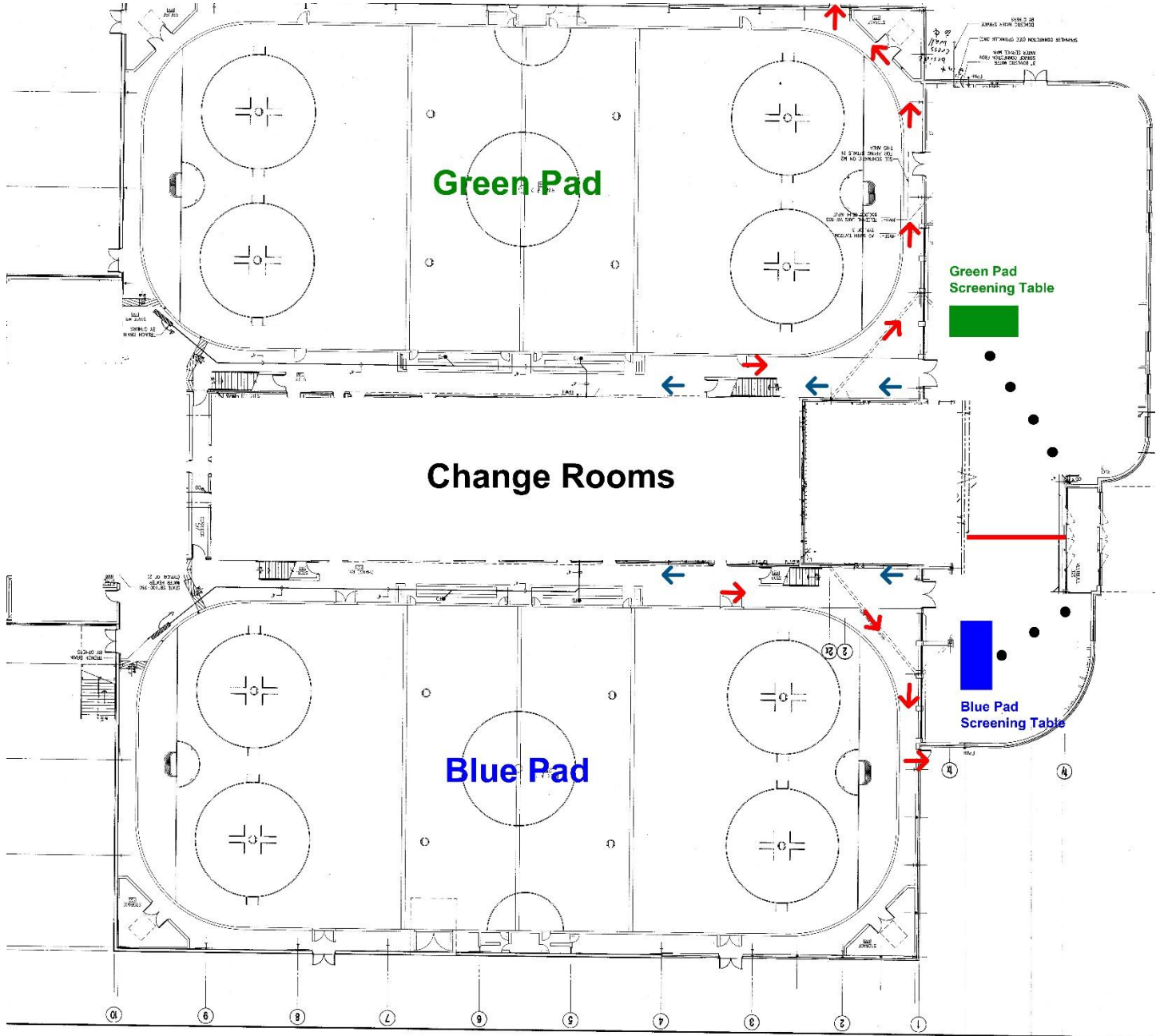
The front door will be opened 15 minutes prior to rental and will be closed and locked once all participants have arrived. The organization or renter will be responsible for contacting facility staff to lock the doors.

Exiting the Facility

Participants and spectators who are within the facility will not be permitted to exit through the main entrance.

Participants and spectators will be asked to leave using the fire exit doors on the east wall of the respective arena. This is to avoid cross over of the public/rental groups.

Participant Traffic Flow



Sample Ice Schedule

Blue Pad	Green Pad
10:00-10:50am	10 min flood
10 min flood	10:30-11:20am
11:00-11:50a	10 min flood
10 min flood	11:30-12:20p
12:00-12:50p	10 min flood
10 min flood	12:30-1:20p
1:00-1:50p	10 min flood
10 min flood	1:30-2:20p

Recreational Programs

No Recreational Ice Programs will be offered during phase 1 or phase 2 of reopening.

When and if Recreational Ice Programs return during the pandemic all participants must pre-register and pay online if required. On ice recreational programs which may be considered for the season will consist of;

- Adult Skate
- Parent and Tot

Further instructions will follow if Recreational Ice Programs return this season.

Concession Operation

Concession operations at this time are pending. New or adjusted protocols will be required and may be closed indefinitely.

Ice and Facility Booking

For ice bookings please contact Community Services (519)245-1105 extension 245

The following information will be included with the ice facility permit:

The novel Coronavirus (COVID-19) has been declared a worldwide pandemic by the World Health Organization. COVID-19, like many other viruses, is extremely contagious and is believed to spread mainly from person-to-person contact. As a result, federal, provincial and municipal governments and health agencies continue to recommend the practice of social distancing.

While the Municipality of Strathroy-Caradoc has put in place preventative measures to reduce the spread of COVID-19, the Municipality cannot guarantee that you and/or your child(ren) will not become infected with COVID-19, or any other virus. Further, attending programs or facilities at the Gemini Sportsplex or West Middlesex Memorial Centre could increase your risk and your child(ren)'s risk of contracting COVID-19, or any other virus.

Before Attending the Facility

Organizations/renters must ensure their participants are;

1. Not experiencing any symptom of illness such as cough, shortness of breath or difficulty breathing, fever, chills, muscle pain, headache, sore throat, or new loss of taste or smell.
2. Have not travelled to a highly impacted area in the last 14 days.
3. Do not believe to have been exposed to someone with a suspected and/or confirmed case of COVID-19.
4. Have not been diagnosed with COVID-19 and not yet cleared as non-contagious by local public health authorities.
5. Following recommended health guidelines as much as possible to limit my exposure to COVID-19.

Rules and Regulations:

1. All participants will be expected to follow the directional arrows and signage when moving throughout the facility.
2. All participants will be expected to use the hand sanitizer stations at the entrance and exit of the facility.
3. All participants must follow the direction of On Duty staff.
4. Failure to follow the directional arrows, signage, commands from On Duty staff or appropriate physical distancing practices will result in expulsion from the facility without refund. The municipality reserves the right to deny access to the facility to any person for any reason.

Strathroy-Caradoc Facilities & COVID-19

ASSUMPTION OF RISK

Strathroy-Caradoc, in collaboration with the Middlesex-London Health Unit, continues to monitor the COVID-19 situation.

Users of Strathroy-Caradoc's facilities are reminded that these areas are available for use at your own risk and are not regularly sanitized. An inherent risk of exposure to communicable diseases including COVID-19 exists in any public space where people are present.

By visiting any facility or publicly accessible space you voluntarily assume all risks including any risk of injury, loss, damage and possible exposure to a communicable disease, including COVID-19.

We remind you to follow the COVID-19 precautionary guidelines being recommended by various Canadian health authorities, including the Middlesex-London Health Unit, Ontario Health, and the Public Health Agency of Canada.

519.245.1070 | www.strathroy-caradoc.ca



FACILITY SAFETY

Gathering limits apply.

If you are sick, feeling unwell, or have been in close contact with someone with symptoms, please stay home.

				
Masks are required in all enclosed public spaces.	Avoid large gatherings.	Wash your hands with soap and water thoroughly and often or use hand sanitizer.	Avoid touching your eyes, nose and mouth, and cough into your arm.	Practice physical distancing. Stay 2 metres from other people.

Please adhere to all provincial and public health guidelines.



WASH YOUR HANDS AFTER EACH USE

<p>1. Wet Hands</p> 	<p>2. Dispense Soap</p> 	<p>3. Lather (20 seconds)</p> 
<p>4. Rinse</p> 	<p>5. Towel Dry</p> 	<p>6. Turn Off with Towel</p> 

Washrooms are cleaned daily.

www.strathroy-caradoc.ca


General Public Screening Questionnaire

The Municipality of Strathroy-Caradoc is taking steps to protect the health and safety of employees. Screening of all individuals, including our own employees, is a condition of being granted entry to this facility.

Date: _____

Name: _____ Phone: _

Do you have any **new or worsening** signs or symptoms (not from a known cause such as seasonal allergies) such as:

- Cough, shortness of breath, sore throat, runny nose, sneezing, nasal congestion
Yes
No
- Hoarse voice, difficulty swallowing, loss of smell and/or taste
Hoarse voice, difficulty swallowing, loss of smell and/or taste
Yes
No
- Nausea/vomiting, diarrhea, abdominal pain, unexplained fatigue/malaise, chills, or headache
Yes
No
- Do you have a fever?
Yes
No
- Have you travelled outside of Canada or had close contact with anyone that has travelled outside of Canada in the past 14 days?
Yes
No
- In the last 14 days, have you had close contact with anyone with respiratory illness or a confirmed or probable case of COVID-19?
Yes
No

If you answer yes to anyone of the questions above, you are NOT permitted to enter further. Please go home.